

MeacoCool MC Series Portable Air Conditioner



Thank you for choosing Meaco, we really do appreciate it

INSTRUCTION MANUAL [EN]

MC8000

MC8000CH

MC9000

MC9000CH

MC10000

MC10000CH

SAFETY INFORMATION

ATTENTION

This portable air conditioner must not be used in rooms under the following conditions:

- Potentially explosive atmosphere
- Aggressive atmospheres
- Featuring a high concentration of solvents
- An extremely high ratio of dust

Keep Children Away: Do not allow children to play with or around this unit, which could result in injury. Be sure the unit is inaccessible to children when not attended.

Keep Unit Grounded: Always operate the unit with a grounding plug and a grounded electrical outlet. A grounding plug is an essential safety feature that helps reduce the risk of shock or fire.

Protect Power Cord from Damage: Never operate a unit with a damaged power cord, as this may lead to electrical or fire hazards. If the power supply cord is damaged, it must be replaced by a cord of the same type and amperage rating.

Extension Cords: Extension cords must be grounded and able to deliver the appropriate voltage to the unit.

Handle with Care: Do not drop, throw or crash the portable air conditioner. Rough treatment can damage the components or wiring and create a hazardous condition.

Run on Stable Surface: Always operate the unit on a stable, level surface, for example the floor or a strong counter, so that the portable air conditioner cannot fall and cause injury.

Keep Out of Water: Never operate the unit in pooled or standing water, as this may create a risk of injury from electrical shock. Do not store or operate outdoors. If electrical wiring or components become wet, thoroughly dry them before using the unit. If in doubt do not use the portable air conditioner and consult a qualified electrician or a Meaco approved engineer.

Keep Air Intakes Clear: Do not clog or block the air intakes by placing the portable air conditioner too close to curtains, walls or anything that will restrict the air inlet. This may cause the unit to overheat and result in a fire or electrical hazard.

Keep Electrical Components Dry: Never allow water inside the portable air conditioner's electrical components. If these areas become wet for any reason, thoroughly dry them before using the portable air conditioner. If in doubt do not use the portable air conditioner and consult a qualified electrician or a Meaco approved engineer.

The operator must make the operating instruction available for the user and make sure that the user does understand the manual.

Wiring Instructions: Should it be necessary to change the plug please note the wires in the mains lead are coloured in accordance with the following code:

BLUE - NEUTRAL
BROWN - LIVE
GREEN AND YELLOW – EARTH

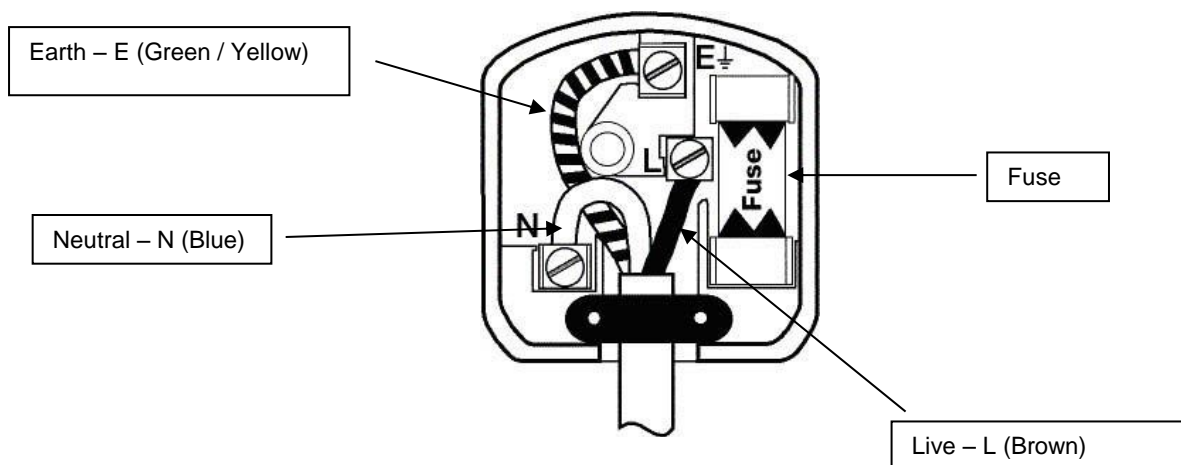
As the colours of the wires in the mains lead of this appliance may not correspond with the coloured markings identifying the terminals in your plug, proceed as follows:

1. The **BLUE** wire is the **NEUTRAL** and must be connected to the terminal which is marked with the letter **N** or coloured **BLACK**.
2. The **BROWN** wire is the **LIVE** and must be connected to the terminal which is marked with the letter **L** or coloured **RED**.
3. The **GREEN/YELLOW** is the **EARTH** and must be connected to the terminal which is marked with the letter **E** or coloured **GREEN OR GREEN/YELLOW**.
4. Always ensure that the cord grip is positioned and fastened correctly.

Only ever use the same fuse as fitted in the original product, if in doubt please contact Meaco first or a qualified electrician.

Example wiring for a standard British plug.

Please note. The Earth Terminal is marked with the letter **E** or Earth Symbol .



1. GENERAL ADVICE

Before putting your portable air conditioner into operation for the first time, the instruction manual should be studied carefully.

After receiving the unit, you should check your portable air conditioner for any transport damage. In case of damage, you should inform the sender immediately.

Allow the air conditioner to stand upright for 6 hours before turning on.

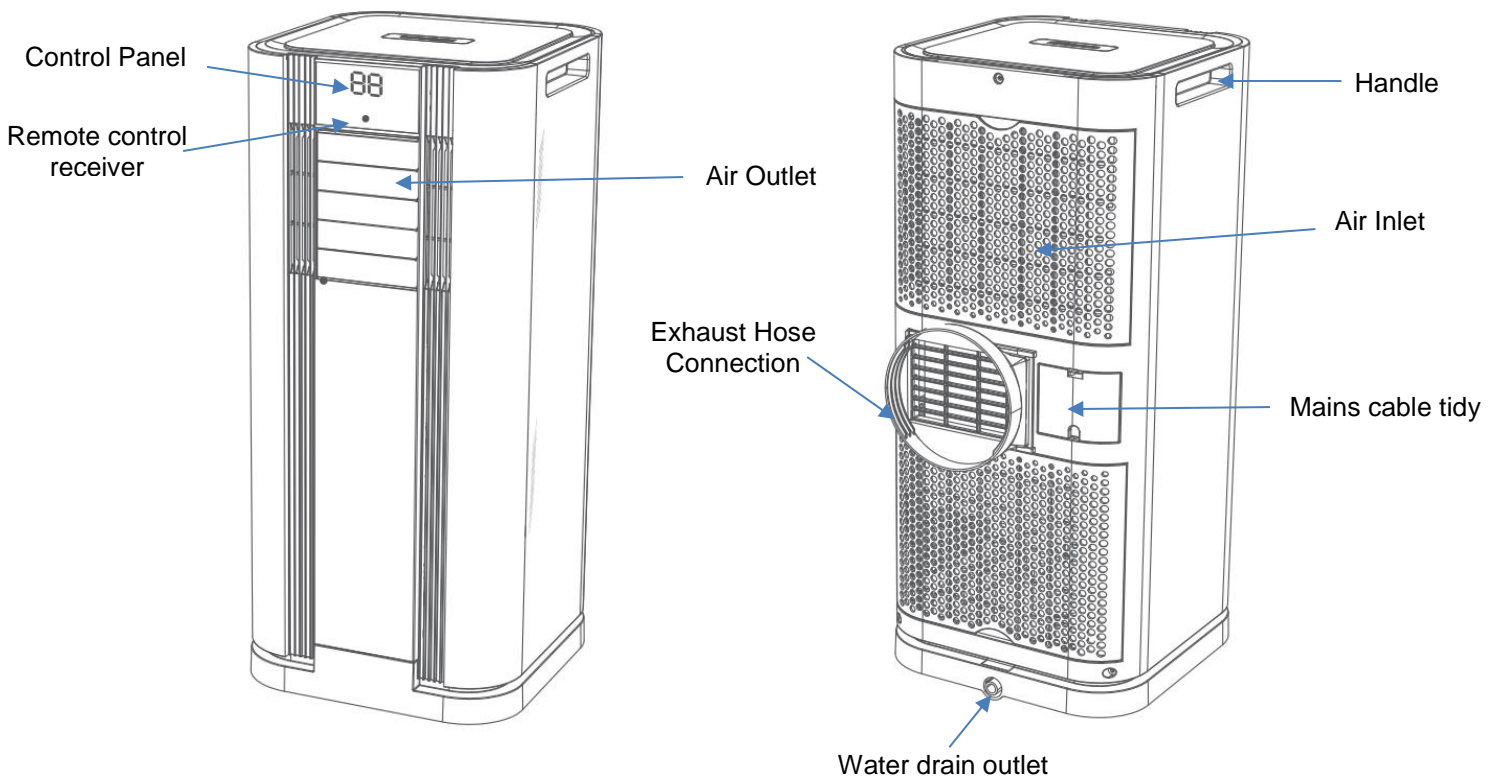
Keep the packaging for the portable air conditioner in a safe place in order to be able to despatch the portable air conditioner safely if it requires a service. In order to save space, you can simply cut through the adhesive tape using a knife and fold up the cardboard box.

2. PORTABLE AIR CONDITIONER PRINCIPLES

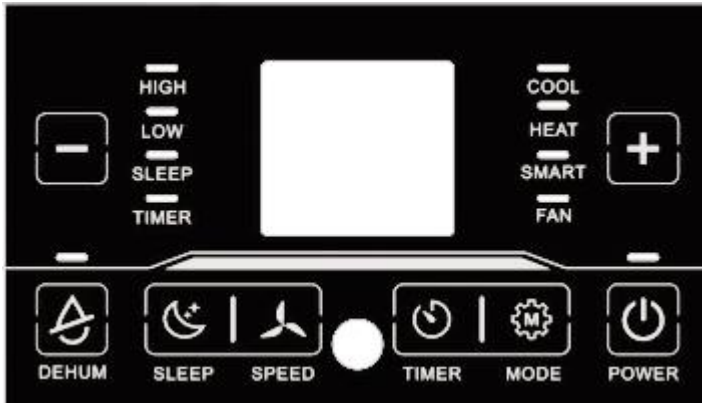
Cooling works best in a well-sealed room with as little heat gain from sunlight as possible. Keep doors closed and window blinds/curtains closed and pre-cool rooms before you go to use them where possible. This is especially useful in bedrooms where pre-cooling the room before going to bed is more sensible than trying to sleep with an air conditioner turned on in the room.

3. PRODUCT IDENTIFICATION

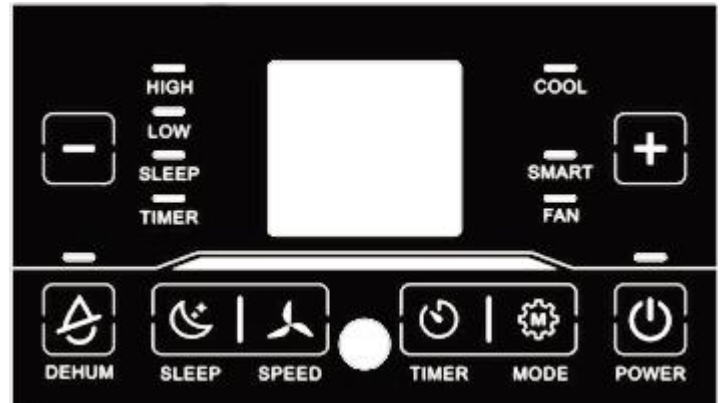
Allow 50cm clearance around all sides for optimum air flow.



4. CONTROL PANEL AND OPERATION



Cooling and Heating Versions (CH models)



Cooling Only Models

POWER Button (on/off)

When plugged in the portable air conditioner enters the standby state and displays '- -'. Press the Power button and the unit enters the default 'Smart' mode. The compressor will not start for three minutes when the machine is turned back on.

Press the Power button again to turn the machine off, the fan will stop 10 seconds after you have turned it off.

MODE Button

Press the Mode button to scroll through the available modes – Cool / Heat / Smart / Fan / Sleep.

TIMER Button

When the portable air conditioner is standby state, you can use the timer button to set an interval between 1 and 12 hours after which the unit will turn ON.

When the portable air conditioner is turned on and running, you can use the timer button to set an interval between 1 and 12 hours after which the unit will turn OFF.

Select 0 hours and the timer function will be cancelled.

SPEED Button

Use to select either low or high fan speed. This option is disabled in Dehumidification and Sleep modes.

SLEEP Button

In Cooling mode and Heating mode you can select Sleep mode and the fan will run in low mode to reduce the noise level and after every hour of operation the target temperature will increase automatically for the first two hours.

DEHUM Button

The portable air conditioner will run in low fan speed will dry the air whilst the room temperature remains above 15°C. You will need a hose connected to drain away the water.

MODES explained

Cooling Mode – When the room temperature is higher than your target temperature the compressor runs and the air is cooled. When the room temperature is below your target the fan still runs but the compressor is turned off.

Cooling does not work below 15°C or above 43°C.

Heating Mode – (CH models only) When the room temperature is lower than your target temperature the compressor runs and the air is heated. When the room temperature is above your target the fan still runs but the compressor is turned off.

Smart Mode – Below 22 – 24°C CH models will turn on the heating cycle, non-heating models will just run the fan only. Between 22 – 24°C the unit runs in fan only, above this it runs in cooling mode.

Fan Mode – No heating or cooling, just the fan running.

Sleep Mode - In Cooling mode and Heating mode (CH models only) you can select Sleep mode and the fan will run in low mode to reduce the noise level and after every hour of operation the target temperature will increase automatically for the first two hours.

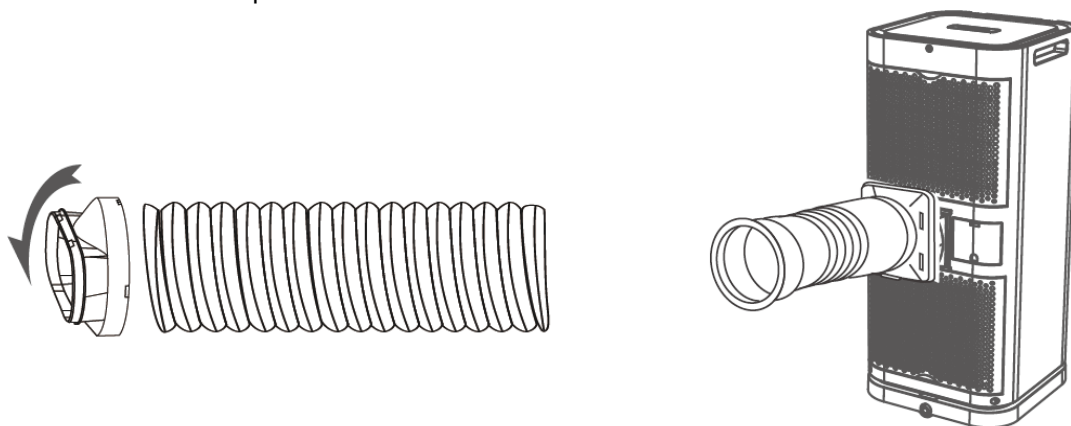
Dehum Mode - The portable air conditioner will run in low fan speed will dry the air whilst the room temperature remains above 15°C. You will need a hose connected to drain away the water.

5. USING THE HOSE AND WINDOW BLANKING PLATE



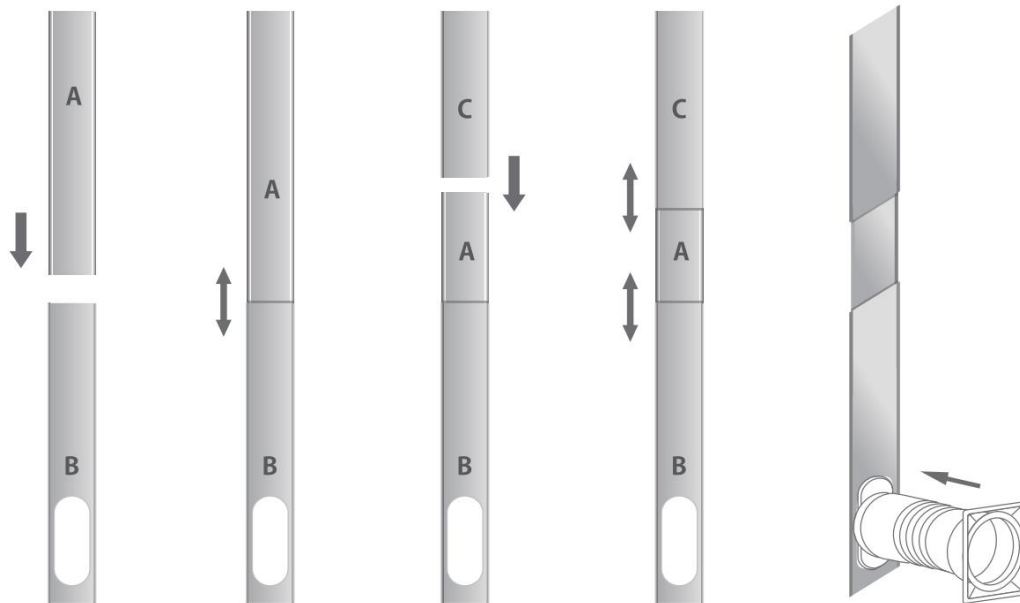
- | | | |
|-------------------|------------------------------|-----------------------------|
| 1. Exhaust duct | 2. Exhaust machine connector | 3. Exhaust window connector |
| 4. Remote control | 5. Window blanking plate | 6. Drainage pipe |

The exhaust duct connects onto the back of the air conditioner to remove the hot air to outside typically through a window. You can use the window blanking plate to seal the rest of the window off to make the cooling of the room more efficient. Connect the duct as per below.



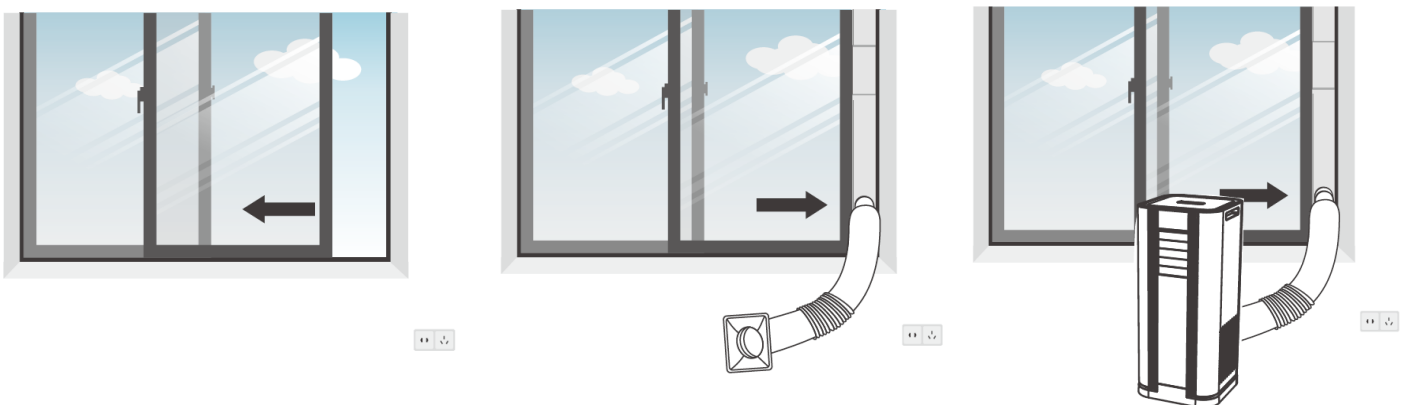
The drainage pipe is used to drain the water away from the air conditioner when Ft appears on the display or when it is being used in Dehumidification mode.

Window Blanking Plate



Assembly of the window blanking plate

- 1: Insert the A plate into the B plate as indicated in Figure 1.
- 2: After completing the assembly, adjust it according to the height of the window.
- 3: If the blanking plate is not long enough to close the window, insert the C plate to increase the height as indicated in Figure 3.
- 4: After completing the assembly of the blanking plate, adjust the A and C sections according to the height of the window until the window is completely closed.
- 5: Install the air pipe and its fittings into the hole in section B.



The more well sealed you have the room and the less direct sunlight you have coming into the room, the more efficient the cooling will be and the less energy will be used.

6. SPECIFICATIONS

Model	MeacoCool 8000	MeacoCool 9000	MeacoCool 10000
Cooling Capacity	8000BTU	9000BTU	10000BTU
Heating Capacity (CH models only)	8000BTU	9000BTU	9000BTU
Maximum air flow	330m ³ /hour	330m ³ /hour	330m ³ /hour
Power supply	220 - 240V / 50Hz		
Power consumption – cooling	890 watts	950 watts	1085 watts
Power consumption – heating	760 watts	890 watts	910 watts
Refrigerant	R410A / 360g	R410A / 360g	R410A / 470g
Max. Input Current/Power	4.5A / 1020W	5.0A / 1080W	5.5A / 1200W
Timer	On and Off Timer 0 – 24 hours		
Duct length	1.8m		
Portable air conditioner Dimensions (mm)	320 x 320 x 740mm		
Box dimensions (mm)	442 x 408 x 945mm		
Nett / Gross Weight (Kgs)	24 / 27Kgs	25 / 28Kgs	26 / 29Kgs

7. CLEANING AND STORAGE

Always turn the portable air conditioner off and unplug it from the socket before cleaning. Clean the fan with a soft, dry cloth, do not allow the fan to get wet. The filter can be vacuumed or washed in warm soapy water, make sure that it is completely dry before reinstalling. The filter should be checked on a weekly basis.

Before moving or storing the air conditioner drain the water away using the drainage hose.

Before storage run the unit in fan only mode for 4 to 6 hours to dry the internal coils of any residual water.

When storing the unit use the cable compartment to store the mains cable. Clean the filter and then store in its plastic bag or original box to protect the fan from dust.

Remember the unit can be used also as a dehumidifier (above 15°C) and as a heater (CH models only).

8. TROUBLESHOOTING

Trouble	Suggestion	Further action
No power to the machine	No power to the unit	Plug the unit in to the power socket and turn the socket on.
	Unit not turned on	Press the Power button.
Power button does not work	Check instructions above	If it still does not work then contact Meaco.
Machine turned on but compressor does not work	Wait a while	Compressor does not turn on for the first three minutes of operation.
Remote control does not work	Battery/out of range	Replace the battery in the remote or stand closer to the machine.
Increased noise level	Air filter dirty	Clean the air inlet filters.
	Air inlet blocked	Make sure that furniture or curtains are not blocking the air inlet.
	Uneven floor	Place the air conditioner on a level surface.
Too noisy to use in a bedroom	Pre-cool the room	Run the air conditioner for several hours before you go to bed with the curtains closed and the door closed so that the room is cool before you go to bed.
Fan speed does not change	Is the machine in Sleep Mode or Dehum Mode?	Check the operation mode and change mode if required.
Cooling not effective	Room size too large	Check whether the air coming out is cool and either let the machine run for longer or use in a smaller room. Keep doors and windows closed.
	Too much direct sunlight	Try to block the heat gain from the sun with blinds or curtains.
	Machine has not been running long enough	It takes time to cool a room because of the heat retained in the fabric of the room.
	Air filter dirty or blocked	This will reduce the airflow and the machine's ability to cool.
Heating not effective (CH models only)	Room size too large	Check whether the air coming out is warm and either let the machine run for longer or use in a smaller room. Keep doors and windows closed.
Machine turns itself off	Set point reached	Either accept that the target has been reached or select a new set point so that the machine will run for longer.
Machine leaks water when moved	Internal water container full	Always drain the machine of water before you move it.
Display shows 'Ft'	Internal water container full	Drain the machine of water using a hose.
Error code E0	Display board error	Contact Meaco
Error code E1	Temperature sensor faulty	Contact Meaco
Error code E2	Evaporator coil sensor faulty	Contact Meaco

9. WARRANTY AND CUSTOMER SERVICE

There is a two year warranty on your portable air conditioner from the date of purchase. Please register your warranty at www.meaco.com, as a thank you we will enter you into our monthly free prize draw.

All material or manufacturing defects will be repaired free of charge.

The following applies:

- Any repairs or replacement of components during the warranty period will not result in an extension of the warranty period.
- The warranty will expire if any alterations have been made, not genuine components have been fitted or if the portable air conditioner has been repaired by a third party.
- Components subject to normal wear and tear, are not covered by the warranty.
- The warranty is only valid on presentation of the original, unaltered, and date-stamped purchase receipt.
- The warranty does not cover damage caused by actions that deviate from those as described in the user's manual or by neglect.
- The warranty does not cover faults caused by dirt or third party products.
- The warranty does not cover accidental damage.
- All claims for compensation, including consequential damage, will not be entertained.

To prevent unnecessary expenses, we recommend that you always carefully read the user's manual first. If this does not provide a solution, call Meaco and we will be happy to help.

This appliance is not intended for use by person (including children) with reduced physical, sensory or mental capabilities, or lack of experience and knowledge, unless they have been given supervision or instruction concerning use of the appliance by a person responsible for their safety.

Children should be supervised to ensure that they do not play with the appliance.

This portable air conditioner has been imported into the U.K. by;

Meaco (U.K.) Limited
Meaco House
Parklands
Railton Road
Guildford
GU2 9JX

Telephone: 01483 234900
Email: service@meaco.com
Website: www.meaco.com
Fax: 01483 232700

Please record, for future reference, your date of purchase and where you bought the portable air conditioner from here.

Date of purchase.....

Purchased from www.meaco.com (if not then please record the supplier's name below).

If you do develop a fault at any time then please do call us and we will always try and help you as best we can.

Please save the box just in case we need to collect the fan from you for a service.